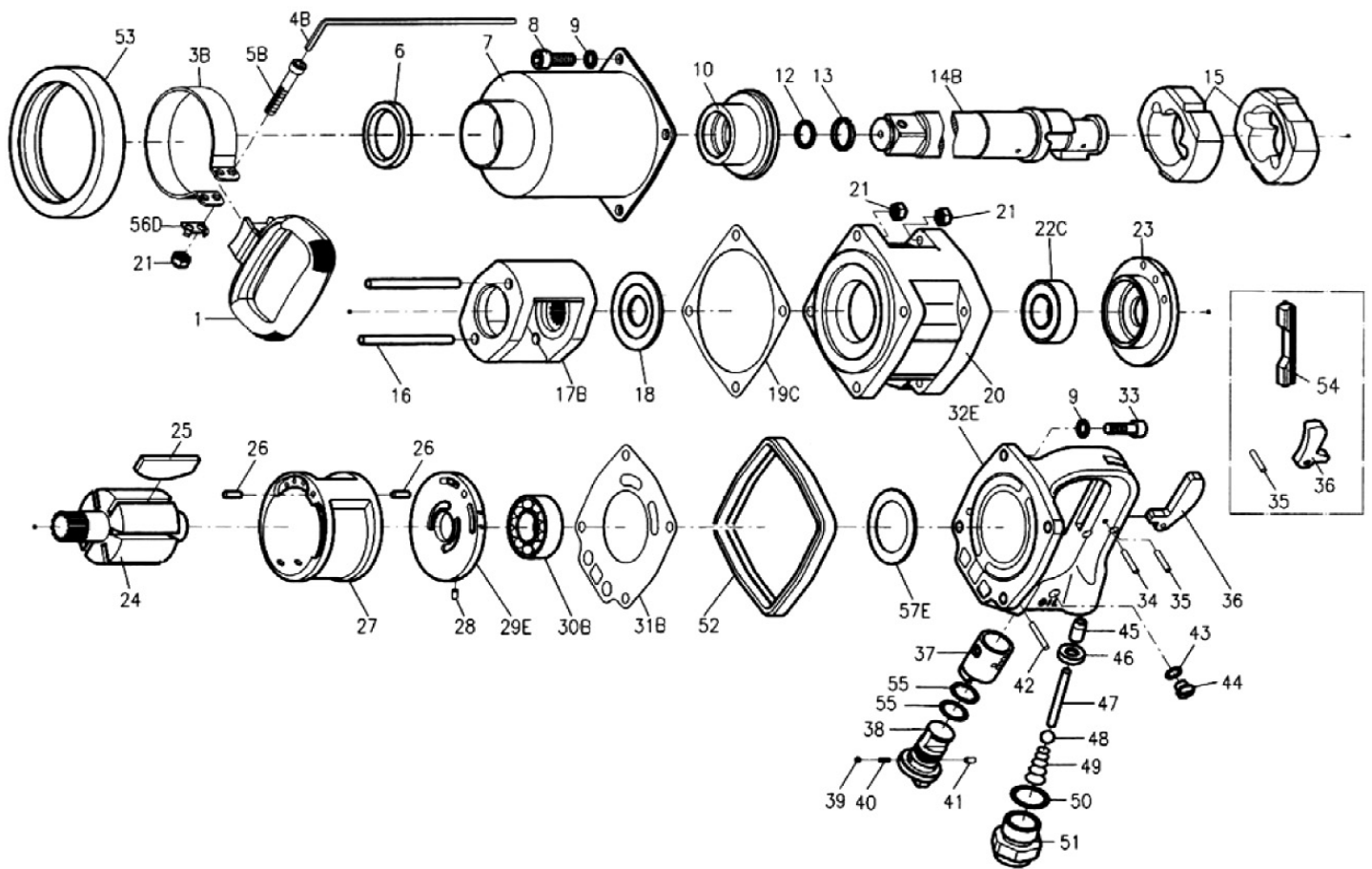


# A-1880(-8) 1" AIR IMPACT WRENCH (TWIN -HAMMER)



## PARTS LIST

No.	Parts No.	Description	Q'ty
1	A188055881-01	Handle	1
3B	A188055881-03B	Clamper	1
4B	A188055881-04B	Hex. Wrench	1
5B	A188055881-05B	Cap Screw	1
6	A188055881-06	Oil Seal	1
7	A188055881-07	Hammer Case	1
8	A188055881-08	Cap Screw	4
9	A188055881-09	Spring Washer	8
10	A188055881-10	Anvil Bushing	1
12	A188055881-12	O-Ring	1
13	A188055881-13	Anvil Collar	1
14B	A188055881-14A	2" Anvil	1
	A188055881-14B	8" Anvil	1
15	A188055881-15	Hammer	2
16	A188055881-16	Hammer Pin	2
17B	A188055881-17B	Hammer Cage	1
18	A188055881-18	Rear Washer	1
19C	A188055881-19C	Front Gasket	1
20	A188055881-20	Motor Housing	1
21	A188055881-21	Lock Nut	10
22C	A188055881-22C	Ball Bearing	1
23	A188055881-23	Front End Plate	1
24	A188055881-24	Rotor	1
25	A188055881-25	Rotor Blade	6
26	A188055881-26	Spring Pin	2
27	A188055881-27	Cylinder	1
28	A188055881-28	Spring Pin	1
29E	A188055881-29E	Rear End Plate	1
30B	A188055881-30B	Ball Bearing	1
31B	A188055881-31B	Rear Gasket	1

No.	Parts No.	Description	Q'ty
32E	A188055881-32E	Handle Frame	1
33	A188055881-33	Cap Screw	4
34	A188055881-34	Spring Pin	1
35	A188055881-35	Pin	1
36	A188055881-36A	Trigger (Outer)	1
	A188055881-36B	Trigger (Inner)	1
37	A188055881-37	Reverse Valve Bushing	1
38	A188055881-38	Regulator	1
39	A188055881-39	Steel Ball	1
40	A188055881-40	Spring	1
41	A188055881-41	Spring Pin	1
42	A188055881-42	Spring Pin	1
43	A188055881-43	O-Ring	1
44	A188055881-44	Oil Chamber Screw	1
45	A188055881-45	Valve Bushing	1
46	A188055881-46	Bushing	1
47	A188055881-47	Valve Stem	1
48	A188055881-48	Steel Ball	1
49	A188055881-49	Spring	1
50	A188055881-50	O-Ring	1
51	A188055881-51A	Air Inlet (1/2"PF)	1
	A188055881-51B	Air Inlet (1/2"PT)	1
	A188055881-51C	Air Inlet (1/2"NPT)	1
52	A188055881-52	Housing Band	1
53	A188055881-53	Front Rubber	1
54	A188055881-54	Rubber Protector	1
55	A188055881-55	O-Ring	2
56D	A188055881-56D	Stopper	1
57E	A188055881-57E	Gasket	1