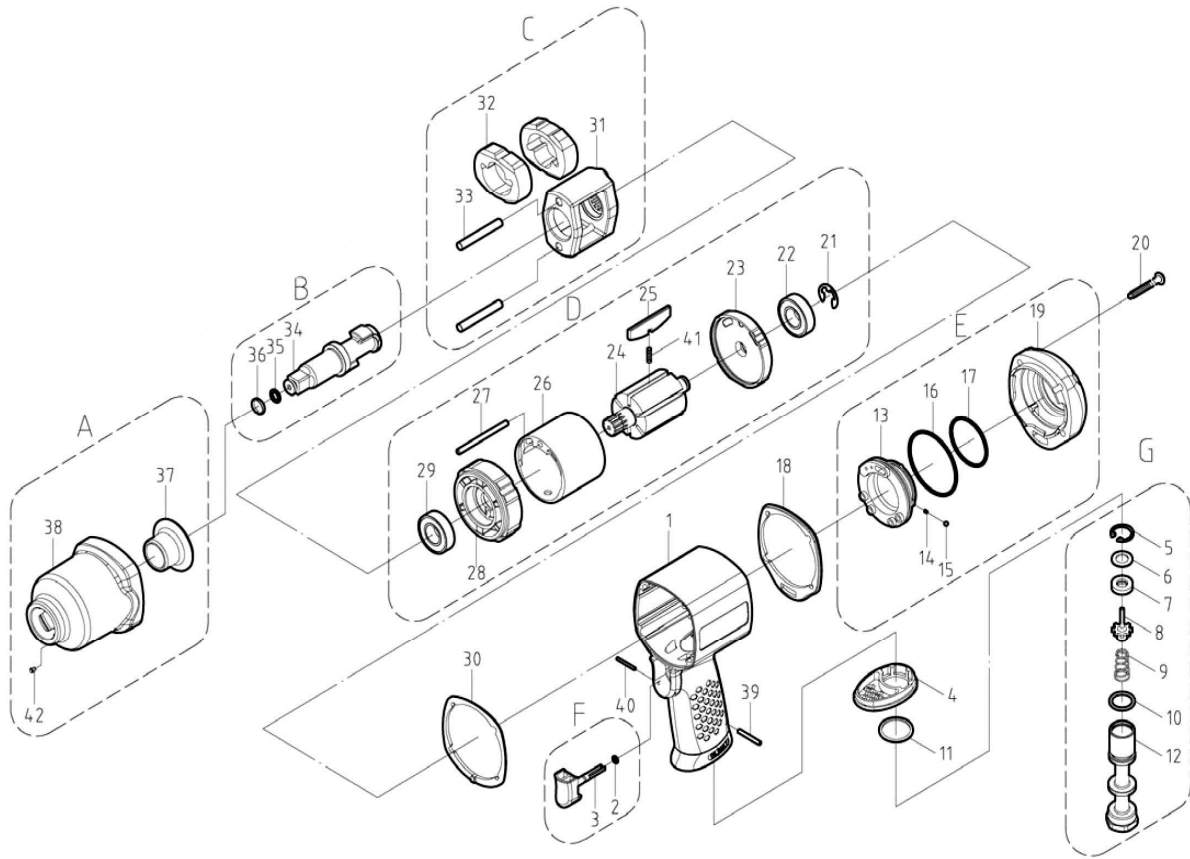


A-2008

1/2" AIR IMPACT WRENCH (TWIN HAMMER), COMPOSIT HOUSING



PARTS LIST

No.	Parts No.	Description	Q'ty
1	A2008-C554-01	Housing	1
2	A2008-C554-02	O-Ring	1
3	A2008-C554-03	Trigger	1
4	A2008-C554-04	Exhaust Deflector	1
5	A2008-C554-05	Retaining Ring	1
6	A2008-C554-06	Washer	1
7	A2008-C554-07	Oil Seal	1
8	A2008-C554-08	Pin Valve Rod	1
9	A2008-C554-09	Cone Spring	1
10	A2008-C554-10	O-Ring	1
11	A2008-C554-11	Washer	1
12	A2008-C554-12A	Air Inlet (PT19)	1
	A2008-C554-12B	Air Inlet (NPT18)	1
13	A2008-C554-13	Reverse Lever	1
14	A2008-C554-14	Spring	1
15	A2008-C554-15	Steel Ball	1
16	A2008-C554-16	O-Ring	1
17	A2008-C554-17	O-Ring	1
18	A2008-C554-18	Packing	1
19	A2008-C554-19	Cover	1
20	A2008-C554-20	Screw	4
21	A2008-C554-21	E-Ring	1
22	A2008-C554-22	Ball Bearing	1
23	A2008-C554-23	Rear Plate	1
24	A2008-C554-24	Rotor	1
25	A2008-C554-25	Blade	7
26	A2008-C554-26	Cylinder	1

No.	Parts No.	Description	Q'ty
27	A2008-C554-27	Spring Pin	1
28	A2008-C554-28	Front Plate	1
29	A2008-C554-29	Ball Bearing	1
30	A2008-C554-30	Packing	1
31	A2008-C554-31	Hammer Cage	1
32	A2008-C554-32	Hammer	2
33	A2008-C554-33	Hammer Pin	2
34	A2008-C554-34	1/2" Dr. Anvil	1
35	A2008-C554-35	O-Ring	1
36	A2008-C554-36	Anvil Collar	1
37	A2008-C554-37	Bushing	1
38	A2008-C554-38	Front Casing	1
39	A2008-C554-39	Spring Pin	1
40	A2008-C554-40	Spring Pin	1
41	A2008-C554-41	Spring	7
42	A2008-C554-42	Oil Drop	1