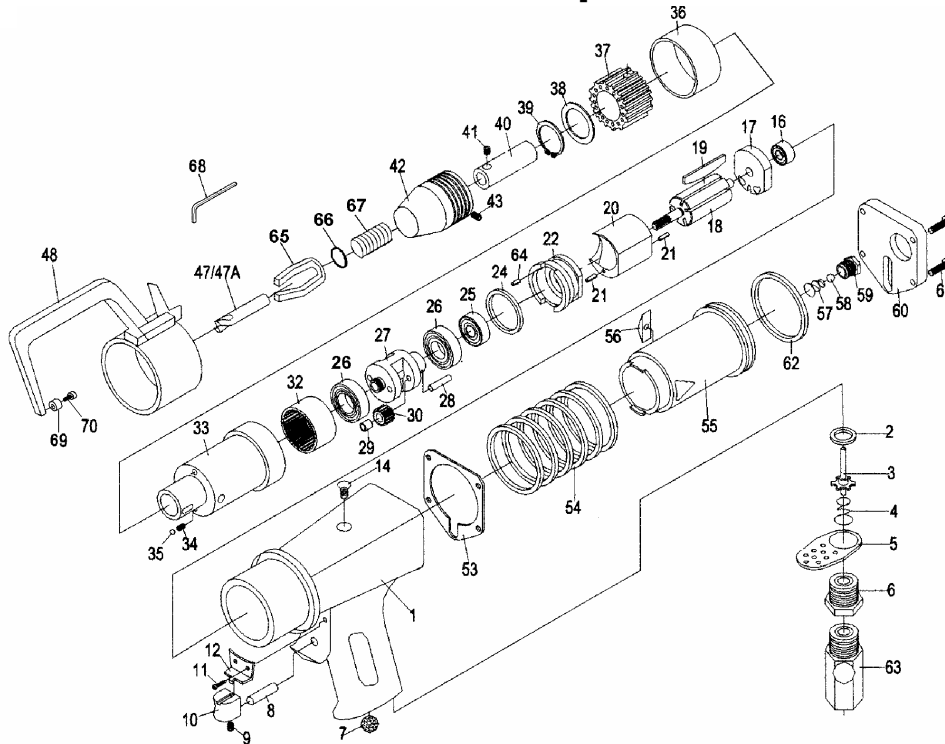




# D-5120A Spot Drill



Ref. No.	Part No.	Description	Q'ty /Tool	Ref. No.	Part No.	Description	Q'ty /Tool
1	SPD5120A001	Housing	1	37	SPD5120037	Nut	1
2	SPA1380002A	Throttle Valve Seat	1	38	SPD5120038	Valve Washer	1
3	SPA1380003A	Throttle Valve	1	39	SPD5120039	Retaining Ring	1
4	SPA1391004	Throttle Valve Spring	1	40	SPD5120040	Bit Holder	1
5	SPA1391005	Exhaust Silencer	1	41	SPD5120041	Set Screw	1
6	SPA1380006	Air Inlet	1	42	SPD5120042	Adjustive Attachment	1
7	SPA1380007	Muffler Element	1	43	SPD5120043	Set Screw	1
8	SPA1391016	Valve Stem	1	47	SPD5110040	Drill Bit, 8.0MM	1
9	SPA1391017	Set Screw	1	47A	SPD5110040A	Drill Bit, 6.5MM	1
10	SPA1391018	Control Trigger	1	48	SPD5120A002	Arm Ass'y	1set
11	SPA1391019	Screw	2	53	SPD5120A003	Gasket	1
12	SPA1391020	End Cap	1	54	SPD5120054	Spring	1
14	SPD5120014	Screw	1	55	SPD5120055	Piston	1
16	SPD5120016	Ball Bearing	1	56	SPD5120056	Setting Block	1
17	SPD5120017	Rear End Plate	1	57	SPD5120057	Spring	1
18	SPD5120018	Rotor	1	58	SPD5120058	Ball	1
19	SPD5120019	Rotor Blade	5	59	SPD5120059	Plug	1
20	SPD5120020	Cylinder	1	60	SPD5120A004	Housing Cover	1
21	SPD5120021	Pin	2	61	SPD5120061	Screw	4
22	SPD5120022	Front End Plate	1	62	SPD5120A005	O-Ring	1
24	SPD5120024	O-Ring	1	63	SPD5120066	Regulator Ass'y	1set
25	SPD5120025	Ball Bearing	1	64	SPD5120A006	Pin	1
26	SPD5120026	Ball Bearing	2	65	SPD5120046	Supporter	1
27	SPD5120027	Gear Cage	1	66	SPD5120045	Retainer	1
28	SPD5120028	Pin	2	67	SPD5120044	Spring	1
29	SPD5120029	Needle Roller	2	68	SPD5120067	Hex. Wrench	1
30	SPD5120030	Gear	2	69	SPD5120068	Counter Ring	1
32	SPD5120032	Internal Gear	1	70	SPD5120069	Screw	1
33	SPD5120033	Gear Housing	1	RK	SPD5120A0RK	Repair Kit Ref. No. 16, 25, 26(x2), 29(x2), 30(x2), 48	1
34	SPD5120034	Spring	2				
35	SPD5120035	Ball	2	SK	SPD5120A0SK	Service Kit Ref. No. 2, 4, 19(x5), 24, 53, 54, 57, 62	1
36	SPD5120036	Ring	1				