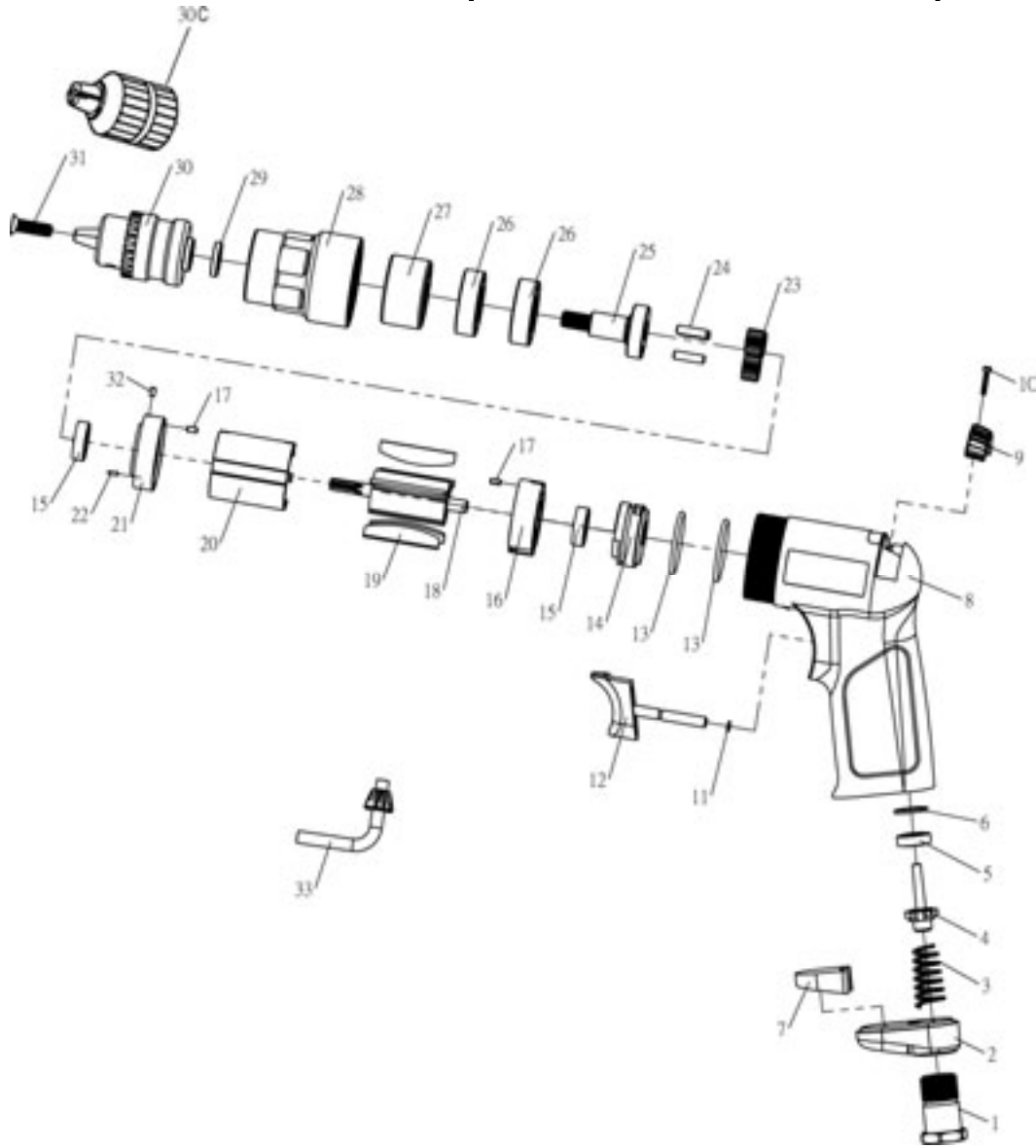


# D-6011

## 3/8" AIR REVERSIBLE DRILL (W/KEYLESS CHUCK)



### PARTS LIST

No.	Parts No.	Description	Q'ty
1	D6011C110-01	Inlet Bushing	1
2	D6011C110-02	Deflector	1
3	D6011C110-03	Valve Spring	1
4	D6011C110-04	Valve	1
5	D6011C110-05	Valve Seat	1
6	D6011C110-06	Spacer	1
7	D6011C110-07	Silencer	1
8	D6011C110-08	Composite Housing	1
9	D6011C110-09	Reverse Valve Lever	1
10	D6011C110-10	Taping Screw (Φ2.3x12L)	1
11	D6011C110-11	O-Ring (3x1)	1
12	D6011C110-12	Trigger	1
13	D6011C110-13	O-Ring (27x2)	2
14	D6011C110-14	Valve Body	1
15	D6011C110-15	Bearing (626)	2
16	D6011C110-16	Rear Plate	1
17	D6011C110-17	Spring Pin	2

No.	Parts No.	Description	Q'ty
18	D6011C110-18	Rotor	1
19	D6011C110-19	Rotor Blade	5
20	D6011C110-20	Cylinder	1
21	D6011C110-21	Front Plate	1
22	D6011C110-22	Pin (Φ1.5x4.8L)	1
23	D6011C110-23	Idle Gear	3
24	D6011C110-24	Pin (Φ4x15.6)	3
25	D6011C110-25	Spindle	1
26	D6011C110-26	Ball Bearing (6201ZZ)	2
27	D6011C110-27	Ring Gear	1
28	D6011C110-28	Front Housing	1
29	D6011C110-29	Chuck Spacer	1
30	D6011C110-30	Drill Chuck [ST-D6011C110]	1
	D6011C110-30C	Keyless Chuck [ST-D6011C110]	1
31	D6011C110-31	Screw (M5x20L)	1
32	D6011C110-32	Spring Pin (M2.5x4)	1
33	D6011C110-33	Key	1